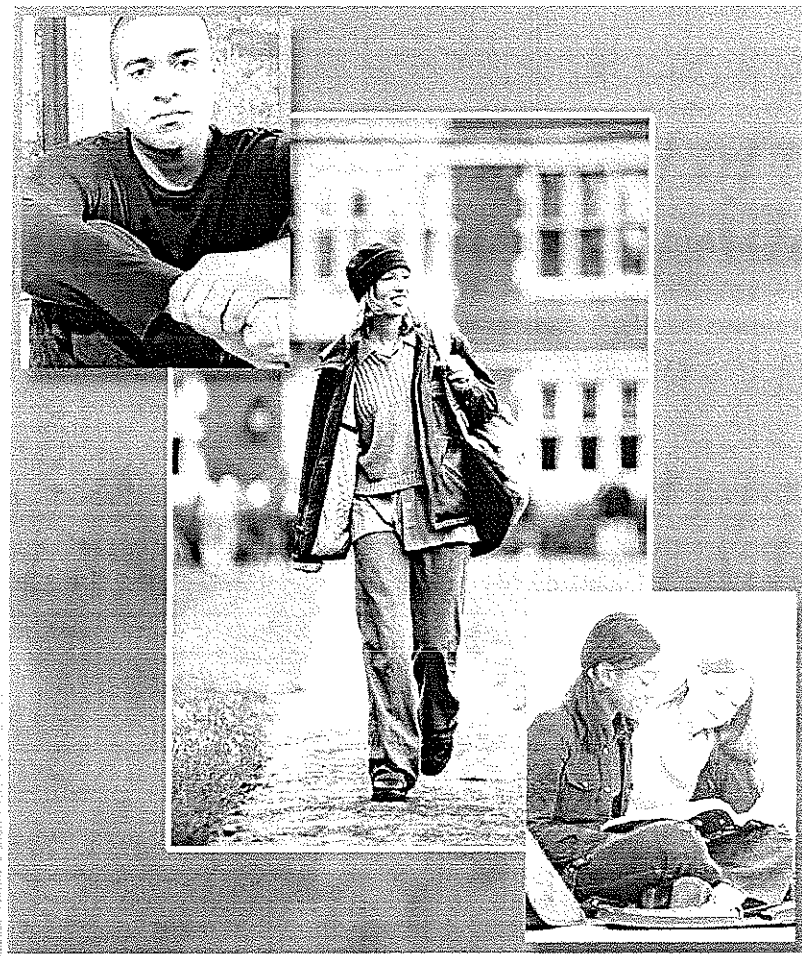


ORACLE

*The Research Journal of the
Association of Fraternity Advisors*



afa

VOLUME 2 + ISSUE 1 + FEBRUARY 2006

Table of Contents

iii **EDITORIAL TEAM**

iv **GENERAL INFORMATION**

v **GUEST EDITORIAL**

A READER-CENTERED APPROACH: MAKING SENSE OF RESEARCH ARTICLES

Andrew Wilson

1 **FAKE-ID USE AMONG FRATERNITY/SORORITY MEMBERS**

William R. Molasso

The author explores differences among fraternity/sorority members and nonmembers in the use of and attitudes about fake IDs. Data from this study of 3,780 students from 12 institutions across the country indicate that fraternity/sorority affiliated students were almost three times as likely to have a fake ID and maintain less healthy attitudes about them when compared to non-affiliated students. The researcher identifies recommendations for professionals working with this community.

8 **GAY MALES IN FRATERNITIES**

Jack Trump and James A. Wallace

The experiences of gay men in college social fraternities serve as the focus of this study. Representing five inter/national fraternities and five colleges and universities, five men share their coping strategies, homosexual identity development, and the reactions of their fraternity brothers to their "coming out."

29 **ONLINE ALCOHOL HEALTH EDUCATION CURRICULUM EVALUATION: HARM REDUCTION FINDINGS AMONG FRATERNITY AND SORORITY MEMBERS**

Andrew Wall

This study examines the use of technology as a tool in the broad-based delivery of alcohol health education within fraternities and sororities. Building on the promise of multimedia education, this evaluation examines an alcohol abuse prevention program delivered through an interactive web-based format for reducing the harm associated with alcohol abuse. The evaluation uses a clustered randomly assigned post-test only evaluation design with 3,552 individuals in 340 chapters to examine differences between individuals who have and who have not received the educational curriculum. The outcome of the study is building evidence that technology-delivered alcohol education has potential to modestly impact academic and personal harm associated heavy alcohol use.

46 **DEFINITIONS OF HAZING: DIFFERENCES AMONG SELECTED STUDENT ORGANIZATIONS**

Chad W. Ellsworth

Fraternities, sororities, military organizations, athletic groups, and marching bands commonly are associated with hazing activities. Although such organizations have been linked to hazing activities, the fact that different entities and organizations have different definitions and perceptions of hazing has hindered any real effort to challenge and combat such activities. The purpose of this study was to

investigate whether the activities students define as hazing differed among the selected student organizations. This study discovered statistically significant differences ($p < .05$) among the selected student organizations for physical hazing activities and psychological hazing activities, as well as statistically significant differences ($p < .05$) between women and men for physical hazing activities, psychological hazing activities, and other hazing activities. This study also identified 10 activities students in all groups identified as hazing, which moves us toward a common definition of hazing.

**61 EFFECTS OF FRATERNITY/SORORITY MEMBERSHIP AND
RECRUITMENT SEMESTER ON GPA AND RETENTION**

Suzy M. Nelson, Silas Halperin, Timothy H. Wasserman, Corinne Smith, and Peter Graham

The researchers assess the relationship of fraternity/sorority membership and semester of recruitment on grade point average (GPA) and student retention, adjusting for covariates through sub classification by propensity score. The findings suggest a consistent positive relationship between fraternity/sorority membership and retention and a varying relationship between fraternity/sorority membership and GPA. Fraternity/sorority membership has a negligible effect on GPA over time, with the exception of the recruitment and pledging semester.

EDITORIAL TEAM

EDITOR

Grahaeme A. Hesp
The Florida State University

ASSOCIATE EDITOR

Daniel Bureau
University of Illinois, Urbana-Champaign

ADVISORY BOARD

Rosalind Alderman
St. Mary's University

Debbie Heida
NASPA

Mary Beth Seiler
Gamma Sigma Alpha

Mari Ann Callais, Ph.D.
Theta Phi Alpha Fraternity

Larry Lunsford
Order of Omega

Allison Swick-Duttine
Perspectives Editor

Charles Eberly, Ph.D.
Center for the Study of the College Fraternity

William Molasso, Ph.D.
Northern Illinois University

Brian Tenclinger.
Association of Fraternity Advisors Foundation

Eric Norman, Ph.D.
ACPA: College Student Educators International

EDITORIAL BOARD

Jim Barber
University of Michigan

Denny Bubrig
Auburn University

Amber Garrison
Florida State University

Andrew Wilson
Emory University

Patrick Biddix
Washington University

Michelle Espino
University of Arizona

Tim Haskell
Santa Clara University

PEER REVIEW BOARD

Ron Binder, Ed.D.
Bowling Green State University

Iowa State University

Marilyn Fordham
National Panhellenic Conference

Robert Kerr
Oregon State University

Laura Osteen, Ph.D.
Florida State University

Gary Bonas
Villanova University

Susan Komives, Ed.D.
University of Maryland

David Persky, Ph.D., J.D.
St. Leo University

Michael Bowie, Ph.D.
University of Florida

Adam Goldstein, Ph.D.
Florida State University

Stanley Levy, Ph.D.
University of Illinois

Sparky Reardon, Ph.D.
University of Mississippi

Matthew Caires
University of Wyoming

David Grady, Ph.D.
University of Iowa

John Wesley Lowery, Ph.D.
University of South Carolina

Dennis Roberts, Ph.D.
Miami University

Mari Ann Callais, Ph.D.
Theta Phi Alpha Fraternity

Dennis Gregory, Ph.D.
Old Dominion University

Tisa Mason, Ed.D., CAE
University of Wisconsin Whitewater

Larry Roper, Ph.D.
Oregon State University

James Caswell, Ed.D.
Southern Methodist University

Bridget Guernsey Riordan, Ph.D.
Emory University

Joel Rudy
Phi Kappa Tau Fraternity

Kathleen Cramer Randall
University of Alabama

Lori Hart Ebert, Ph.D.
Pi Kappa Phi Fraternity

Malinda Matney, Ph.D.
University of Michigan

Penny Rue, Ph.D.
University of Virginia

George Dickson
Kappa Sigma Fraternity

John Hayek, Ph.D.
Kentucky Office of Higher Education

Richard McKaig, Ed.D.
Indiana University

Esther Thorson, Ph.D.
University of Missouri

Charles Eberly, Ph.D.
Eastern Illinois University

Debbie Heida
Berry College

William Molasso, Ph.D.
Northern Illinois University

Heather Wilson, Ed.D.
Alpha Chi Omega Fraternity

Shannon Ellis, Ph.D.
University of Nevada Reno

Joan Hirt, Ph.D.
Virginia Polytechnic Institute and State University

Larry Moneta, Ed.D.
Duke University

Terry Zacker, Ph.D.
University of Maryland

Nancy Evans, Ph.D.

Thomas B. Jelke, Ph.D.
tjelke solutions

William Nelson, Ph.D.
University of Iowa
 Hank Nuwer
Franklin College